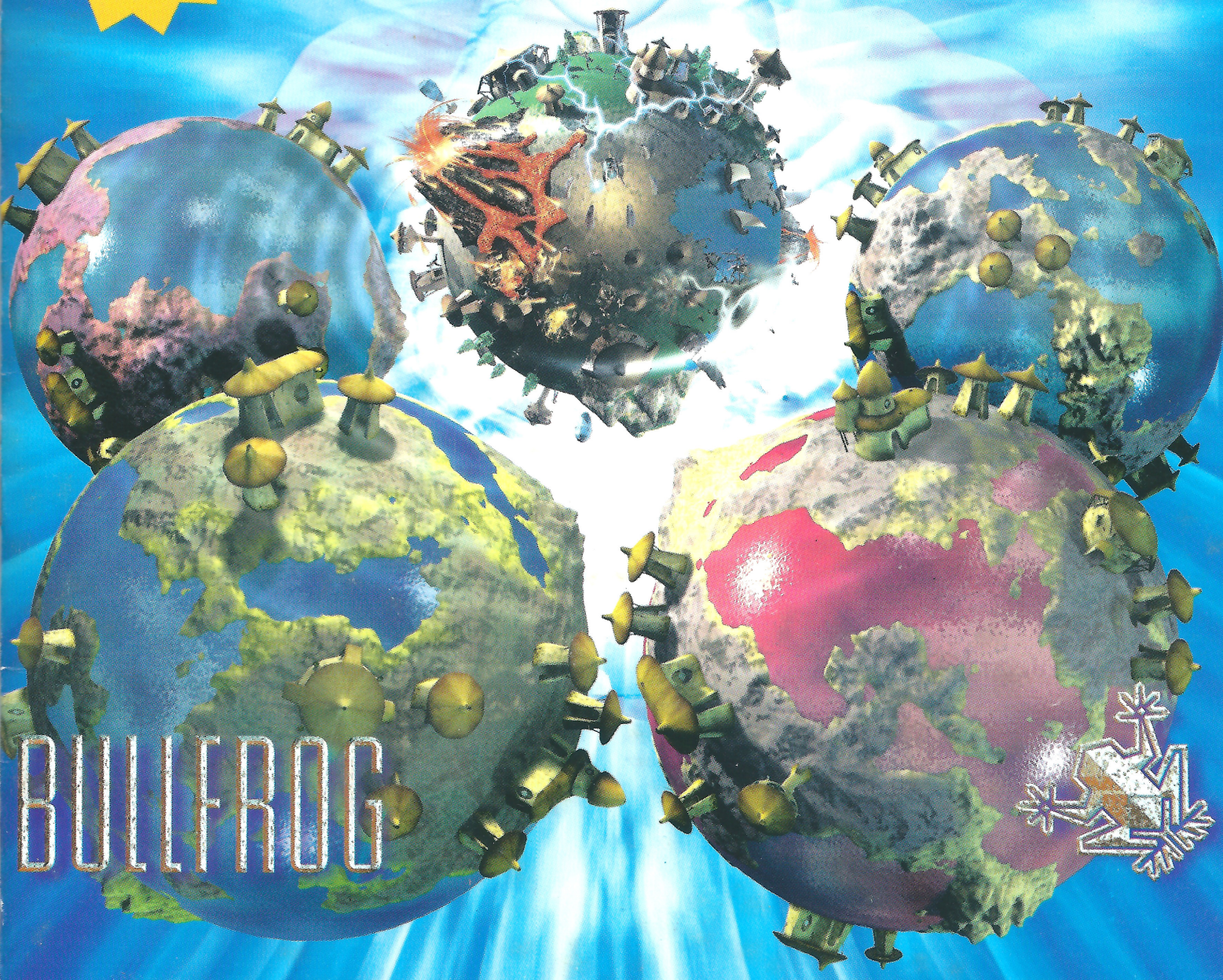


POPVLOVS™

THE BEGINNING
UNDISCOVERED WORLDS™

THE
OFFICIAL
MISSION
DISK



BULLFROG

POPULOUS™: THE BEGINNING UNDISCOVERED WORLDS™

INSTALLATION AND PLAYGUIDE

WARNING: TO OWNERS OF PROJECTION TELEVISIONS

Still pictures or images may cause permanent picture-tube damage or mark the phosphor of the CRT. Avoid repeated or extended use of video games on large-screen projection televisions.

EPILEPSY WARNING

PLEASE READ BEFORE USING THIS GAME OR ALLOWING YOUR CHILDREN TO USE IT.

Some people are susceptible to epileptic seizures or loss of consciousness when exposed to certain flashing lights or light patterns in everyday life.

Such people may have a seizure while watching television images or playing certain video games. This may happen even if the person has no medical history of epilepsy or has never had any epileptic seizures.

If you or anyone in your family has ever had symptoms related to epilepsy (seizures or loss of consciousness) when exposed to flashing lights, consult your doctor prior to playing.

We advise that parents should monitor the use of video games by their children. If you or your child experience any of the following symptoms: dizziness, blurred vision, eye or muscle twitches, loss of consciousness, disorientation, any involuntary movement or convulsion, while playing a video game, IMMEDIATELY discontinue use and consult your doctor.

PRECAUTIONS TO TAKE DURING USE

- Do not stand too close to the screen. Sit a good distance away from the screen, as far away as the length of the cable allows.
- Preferably play the game on a small screen.
- Avoid playing if you are tired or have not had much sleep.
- Make sure that the room in which you are playing is well lit.
- Rest for at least 10 to 15 minutes per hour while playing a video game.

SYSTEM REQUIREMENTS

Minimum Configuration

- PC running Populous: The Beginning
- Additional 20MB of hard disk space

DISK PREPARATION

Before you install any software, it is critical that your hard drive be in proper working order. We recommend running ScanDisk and Disk Defragmenter. ScanDisk searches your hard drive for any lost allocation units as well as any cross-linked files and directories. Disk Defragmenter ensures that your data is sorted properly. Failure to verify this may result in corrupt data.

1. First, run ScanDisk. To start ScanDisk, left-click on the **START** button from the Taskbar. The Start menu opens.
2. From the Start menu, select **RUN**. Then, in the Run dialog box, type **scandisk** and click **OK**.

Once the program starts, ensure that you have selected **THOROUGH** in the Type of test section, make sure there is a check mark in the **AUTOMATICALLY FIX ERRORS** box and select the hard drive you are installing the game to (e.g., C:). Once everything is set up correctly, click **START** to have the program scan the drive and correct any errors.

3. Next, run Disk Defragmenter. To start Disk Defragmenter, left-click on the **START** button from the Taskbar. The Start menu opens.
4. From the Start menu, select **RUN**. Then, in the Run dialog box, type **DEFRAG** and click **OK**. As with ScanDisk, select the drive you are installing the game to and click **OK**.

INSTALLATION INSTRUCTIONS

Insert the *Undiscovered Worlds* CD-ROM into your CD-ROM drive. *Undiscovered Worlds* uses the AutoPlay feature of Windows® 95/98 and the Setup program will run automatically.

If the AutoPlay feature is disabled on your computer then follow these instructions:

1. Click on the "Start" button.
2. Select the "Run" option on the menu.
3. Select "Browse" and locate the CD-ROM drive.
4. Double-click on the "Setup.exe" file. This may appear as "Setup" on some systems, but will always have a CD icon before it.
5. Click "OK".

UNINSTALLING

To uninstall *Populous: The Beginning* and *Undiscovered Worlds*, go to the **POPULOUS** Folder in the **Start** menu and left-click on **Uninstall Populous and Undiscovered Worlds** to proceed.

Should this fail to work, left-click on the **Start** menu, select **Settings** and then **Control Panel**. Run **Add/Remove Programs** and scroll down the list until you see **Populous and Undiscovered Worlds**, select it and left-click on **Add/Remove** to uninstall.

If the uninstaller fails to completely remove *Populous: The Beginning* and *Undiscovered Worlds* (it could, for example, not delete your Save folder), delete the folder to which you installed the game. For example, double left-click on **My Computer**, double left-click on the **C:** drive, double left-click on **Program Files**, right-click on the **Bullfrog** folder and select **Delete**. Click **yes** to confirm. This will send the remaining files to the Recycle Bin, which you will then need to empty.

AFTER THE INSTALL

To access the new single and multi player missions, run *Undiscovered Worlds* using the following route from your Windows start bar:

Start>Programs>Bullfrog>Populous > Undiscovered Worlds

The game launches automatically.

STORY

The great shaman has left this plane and transcended to godhood. In her wake the Dakini, Matak and Chumara tribes are in disarray – their own shaman robbed of the opportunity of immortality. Mad with revenge, the tribes vow to smite down the remains of your tribe – but they underestimate your power. As Imala, the new spiritual leader of your tribe, you must return balance to the universe – proving yourself as the rightful heir to the devastating powers bestowed upon you by the great shaman.

CAN WE HELP YOU?

Do you have a problem or do you just want to ask a question?

If so, there are several ways you can obtain help or have your questions answered.

1. SOFTWARE "ON-LINE" HELP FILE.

All our new releases now include on-line help file with hints and tips on how to resolve problems that you may confront while trying to run the game. To access the help file simply click on "Tech Support" in the game's Autorun menu. This support file can give you access to relevant support sites via web links within the guide. It also gives you access to the Customer Support department via a support program within the guide. This program can then send us your details via E-mail or a Fax/Modem.

2. THE MANUAL AND REFERENCE CARD.

These two documents give you comprehensive details of everything you need to know to enjoy the game.

3. SUPPORT VIA ON-LINE SERVICES.

<http://www.ea.com>

Electronic Arts has 24 hour support via our on-line services. Here you will find extensive product support and other information. In addition, you will find answers to Frequently Asked Questions (FAQ) plus patches, updates and demos. If you still cannot find an answer to your query, E-mail us on

uk-support@ea.com

You will receive an automated reply, normally within minutes, giving details of all the games you can automatically request trouble-shooting information on as well as a number of standard trouble-shooting guides and information sheets. If you still have an unanswered question you may contact a representative for a personal reply.

4. GAME HINTS AND CHEATS.

To acquire hints and cheats for the majority of our new releases you will need to call the Electronic Arts Hintline (Lines open 24 hours a day) on ;

09067 53 22 53

Note: This is a premium charge line at a cost of 75p per minute. Please obtain permission to call this number from the person who pays the phone bill, before you call.

5. CUSTOMER SUPPORT BY PHONE (INCLUDING FAXBACK).

If you still have not found the answer then you can contact us on our Customer Service number. On this number you will have access to a number of automated services including Faxback and recorded messages.

You will also be able to talk to one of our Support Representatives, who will be pleased to help you with your questions. However, please ensure you have followed all normal trouble-shooting steps before you call. If you do call, please be sure to have all relevant information to hand.

6. HAVING PROBLEMS OBTAINING ONE OF OUR GAMES (DIRECT SALES).

Electronic Arts now has a Direct Sales department. We have over 100 titles currently available, covering most formats. If you have a problem finding any of our games at your local store then please call **01753 546465** for our Direct Sales department. They will be happy to assist you in finding the game you require.

CREDITS

BULLFROG PRODUCTIONS

Executive Producer: Richard Leinfellner

Producer: Stuart Whyte

Associate Producer – Level Design: Rajan Tande

Level designers: Ken Malcolm, Al Cullum , Dan Riley

Scripting: Al Cullum

Programming: Alan Wright

Art: Mark Pitcher, James Boty, Alex Godsill, Steve Leney

FMV: Steve Brown, Steve Leney, Jamie Bradshaw, Jason Lord, DigiMania

Installer programming: Andy McDonald

Lead QA: Rob Charlish, Phil Mansell

QA: Dominic Waddell, Tristan Paramor, Dan McDonald, Dominic Murphy, John Brunton, Michael Willis

Manual: Stuart Whyte

EA EUROPE

DTP Manager: Anita Legg

Documentation Editor: James Lenoël

Documentation Layout: David Sewell

UK QA Lead: Andy Perkins & Simon Romans

European Marketing Manager: David Dyett

Packaging Design: Caroline Page, Edward Du Bois

Packaging Copywriter: James Leach

Materials Planner: Julie Pain

Thanks to: Carol Aggett, Wayne Frost, Pete Blow, David Knox, David Dyett, Ann Williams, Simon Lee, The Populous: The Beginning team & Bullfrog Productions

Notice

ELECTRONIC ARTS RESERVES THE RIGHT TO MAKE IMPROVEMENTS IN THIS PRODUCT DESCRIBED IN THIS MANUAL AT ANY TIME AND WITHOUT NOTICE.

THIS MANUAL, AND THE SOFTWARE DESCRIBED IN THIS MANUAL, IS UNDER COPYRIGHT. ALL RIGHTS ARE RESERVED. NO PART OF THIS MANUAL OR THE DESCRIBED SOFTWARE MAY BE COPIED, REPRODUCED, TRANSLATED OR REDUCED TO ANY ELECTRONIC MEDIUM OR MACHINE-READABLE FORM WITHOUT THE PRIOR WRITTEN CONSENT OF ELECTRONIC ARTS LIMITED, PO BOX 835, SLOUGH, BERKS, SL3 8XU, ENGLAND.

ELECTRONIC ARTS MAKES NO WARRANTIES, CONDITIONS OR REPRESENTATIONS EXPRESS OR IMPLIED, WITH RESPECT TO THIS MANUAL, ITS QUALITY, MERCHANTABILITY OR FITNESS FOR ANY PARTICULAR PURPOSE. THIS MANUAL IS PROVIDED "AS IS". ELECTRONIC ARTS MAKES CERTAIN LIMITED WARRANTIES WITH RESPECT TO THE SOFTWARE AND THE MEDIA FOR THE SOFTWARE. IN NO EVENT SHALL ELECTRONIC ARTS BE LIABLE FOR ANY SPECIAL, INDIRECT OR CONSEQUENTIAL DAMAGES.

THESE TERMS AND CONDITIONS DO NOT AFFECT OR PREJUDICE THE STATUTORY RIGHTS OF A PURCHASER IN ANY CASE WHERE A PURCHASER IS A CONSUMER ACQUIRING GOODS OTHERWISE THAN IN THE COURSE OF A BUSINESS.

Limited Warranty

Electronic Arts warrants to the original purchaser of this computer software product that the recording media on which the software programs are recorded will be free from defects in materials and workmanship for 12 months from the date of purchase. During such period defective media will be replaced if the original product is returned to Electronic Arts at the address at the rear of this document, together with a dated proof of purchase, a statement describing the defects, the faulty media and your return address.

This warranty is in addition to, and does not affect your statutory rights in any way.

This warranty does not apply to the software program themselves, which are provided "as is", nor does it apply to media which has been subject to misuse, damage or excessive wear.

Returns After Warranty.

Electronic Arts will replace user-damaged media, current stocks allowing, if the original media is returned with a Eurocheque or postal order for £7.50 per CD, payable to Electronic Arts Ltd.

Please remember to include full details of the defect, your name, address and, where possible, a daytime telephone number where we can contact you.

Electronic Arts Customer Warranty, P.O. Box 835, Slough, SL3 8XU, UK.

©1999 Electronic Arts. Electronic Arts, Bullfrog, Bullfrog logo, Populous and Undiscovered Worlds are trademarks or registered trademarks of Electronic Arts in the United States and/or other countries. All rights reserved. Bullfrog is an Electronic Arts™ company. Microsoft and Windows are either trademarks or registered trademarks of Microsoft Corporation in the U.S. and/or other countries. QSound and the Q Logo are registered trademarks of QSound Labs, Inc. Dolby and the double - D symbol are trademarks of Dolby Laboratories. "Environmental Audio" is a trademark and the Environmental Audio logo is a registered trademark of Creative Technologies Ltd. All other trademarks are the property of their respective owners.